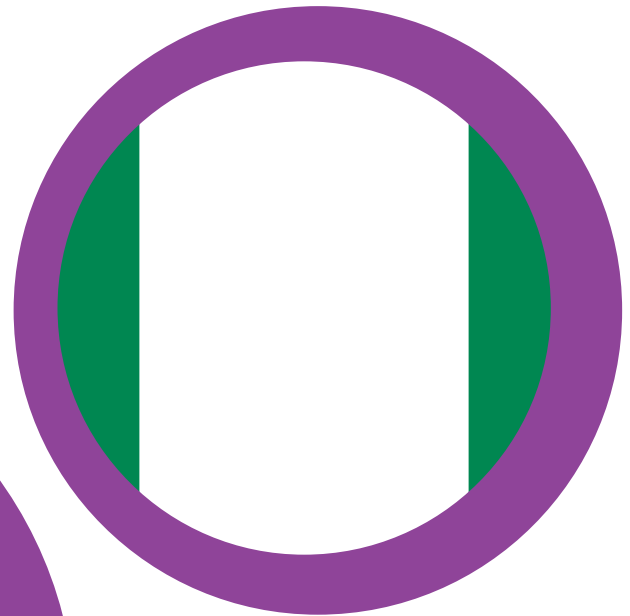


# Returning to Nigeria



Hibiscus Initiatives provide advocacy, support and specialist services to marginalised migrants affected by the criminal justice and immigration systems to enable informed choices and positive change. We promote justice and respect to reduce inequalities.

### **The charity's work falls within four broad categories:**

- Community and prisons
- International resettlement and detention services
- Anti-trafficking
- Volunteering and mentoring

The international resettlement programme provides a support service to clients to facilitate their reintegration into the community in their country of origin.

Through providing resettlement related support and practical assistance we aim to ensure the smoothest possible transition for our clients returning to their home countries. Often this can mean signposting to organisations providing support, finding accommodation, getting identification documents and passports back, helping with internal travel, liaison with families and providing resettlement grants to aid small business start-ups.

Our work is important to clients that have exhausted their rights to be in the UK, those that wish to depart voluntarily, or those who are being deported at the end of serving a sentence for a criminal offence.

### **Contact us**

If you would like to know more about Hibiscus Initiatives, receive support, or know a friend or family member who may need our assistance, please contact:

#### **Hibiscus Initiatives**

Resource for London  
356 Holloway Road  
London N7 6PA

**Email:** [info@hibiscus.org.uk](mailto:info@hibiscus.org.uk)

**Website:** <https://www.hibiscusinitiatives.org.uk>

**Phone:** +44 (0)20 7697 4120

**Fax:** +44 (0)20 7697 4272



# Contents

<b>Introduction</b> .....	<b>4</b>
<b>Planning for your return</b> .....	<b>5</b>
Medication	
Family and friends	
Faith-based organisations	
<b>What to expect on arrival</b> .....	<b>6</b>
Arrival at the airport	
<b>Transport</b> .....	<b>7</b>
<b>Essential information and important documents</b> .....	<b>8</b>
ID cards	
Driving licence	
Opening a bank account	
<b>Accommodation</b> .....	<b>9</b>
<b>Healthcare</b> .....	<b>10</b>
Overview	
List of hospitals	
Sexual and reproductive health	
Psychosocial counselling	
<b>Education and employment</b> .....	<b>12</b>
Education	
Employment and training	
<b>Useful information</b> .....	<b>13</b>
Cost of living	
Significant dates and public holidays	
Emergency contact numbers	
<b>Useful contacts</b> .....	<b>14</b>
<b>Map of Nigeria</b> .....	<b>15</b>
<b>Disclaimer</b> .....	<b>16</b>

# Introduction

This booklet has been designed to provide you with information that will help ease your return to Nigeria. Inside it you will find useful general information about your return, what to expect and a list of contact details of organisations that may be able to help with any resettlement related issues you encounter.



# Planning for your return

The more planning that is done for your return to Nigeria, the easier it will be for you to benefit from support services when you arrive. There are a number of things to think about before you depart the UK, such as: who will meet you at the airport? Where will you stay? Can family or friends support you emotionally, financially or help you to familiarise yourself with life in Nigeria?

Before your departure, you may want to consider:

## Medication

It is important to talk to your doctor before leaving for Nigeria. If you are currently taking medication, your doctor should be able to advise you on how to source further medication. It might be beneficial for you to request a letter from a GP or doctor, detailing your condition. The more information you have about your medical condition, the easier it will be to continue treatment after your arrival.

## Family and friends

If you have family or friends living in Nigeria, you may wish to tell them of your arrival in case they can support you with your immediate needs upon your return. Try to take their contact details with you to the airport so that you can contact them on arrival or before you leave.

The British Red Cross provides a free service aimed at restoring contact between families that have been separated. You may access this programme by directly contacting them at:

**Address:** British Red Cross, UK Office, 44 Moorfields, London EC2Y 9AL

**Email:** [contactus@redcross.org.uk](mailto:contactus@redcross.org.uk)

**Phone:** +44 (0)344 871 1111

**Website:** [www.redcross.org.uk](http://www.redcross.org.uk)

## Faith-based organisations

There may be faith-based organisations in the UK that can suggest avenues of support and places of worship where you will be returning. Faith-based organisations can often provide essential basic support to those of all faiths or with no faith. A good place to start would be to contact members of your local community or faith-based leaders. It is advisable to make enquiries with these organisations or communities early on so that suitable arrangements can be made for you.



# What to expect on arrival

## Arrival at the airport

Once you have disembarked from the aircraft you will be taken to the airport where administrative services will be carried out for your re-entry into Nigeria.

Now that you are in Nigeria, you may want to start thinking about being reunited with family and friends, finding a job, getting a new ID and so on.



# Transport

The main points of entry to Nigeria by air are: Lagos and Abuja. It is possible to travel between Lagos and Abuja by road and rail travel, however flights are the quickest route.

## Trains

Train services in Nigeria are operated by the Nigerian Railway Corporation. The country has three main railway lines: Lagos to Nguru, Port Harcourt to Maiduguri and Lagos to Kano (some via Ibadan). There are also trains that run from Kaduna to Abuja.

A train ticket from Lagos to Kano will cost NGN 2900 (approximately £6.00) and NGN 500 (approximately £1.00) from Lagos to Ibadan. More details on routes and fares can be found by visiting: [www.nrc.gov.ng](http://www.nrc.gov.ng).

## Buses

The Lagos Bus Rapid Transit System (BRT) is a modern bus network that replaced some of the older Molue buses. BRT buses are red or blue and operate on segregated or priority lanes between the mainland and the islands of Lagos. This is a popular way to travel so queues are common.

## Taxis

Taxi companies operating in the major cities are either run on a meter or are a fixed fare, in which case it is advisable to negotiate the fare before entering the taxi. The best way to arrange a taxi is to pre-book by phone or mobile app, for example Uber or TaxiNaija. It is also possible to hail a taxi from the roadside.

## Ferries

Travelling by ferry or boat offers an efficient method of transport around Lagos, avoiding busy roads. Regular ferry routes run between the mainland, Lagos Island and Victoria Island. Boats offer transport along the numerous waterways of Lagos, connecting the smaller islands. The Uber app also allows you to book a boat or ferry journey in advance.



# Essential information & important documents

## ID cards

All citizens are required to apply for a national identity number (NIN) which is assigned by the National Identity Management Commission (NIMC). A NIN is mandatory to be able to apply for a passport, open a bank account, to vote in elections and access welfare and government services. For more information on applying for a NIN visit <https://www.nimc.gov.ng/about-nin/>.

At 16 years of age, you can apply for an e-ID card which has an electronic chip containing your NIN. The e-ID card has various uses such as:

- Electronic identity (useful for banks and other financial institutions)
- Payment (money can be transferred, paid into or loaded onto the e-ID card and can also be used to pay for goods and services)
- Authenticating identity (your fingerprints are taken when you register for the e-ID card and stored on a government database)
- Electronic signature (acts as a signature for certain online applications and at ATM's)
- Travel document (acts as a passport for travel to certain West African countries that do not require a visa)

The e-ID card also allows access to public services such as: health, pensions, voting, taxation, accessing driver's licence details, public transport payments (in certain areas), accessing mobile phone and wireless networks and accessing insurance schemes.

## Driving licence

To apply for a new driving licence, you can do so online. Details of the process and the application form can be found by visiting: <https://www.nigeriadriverslicence.org/>. During the process you will be required to take a driving test, have your biometric data recorded and pay a processing fee.

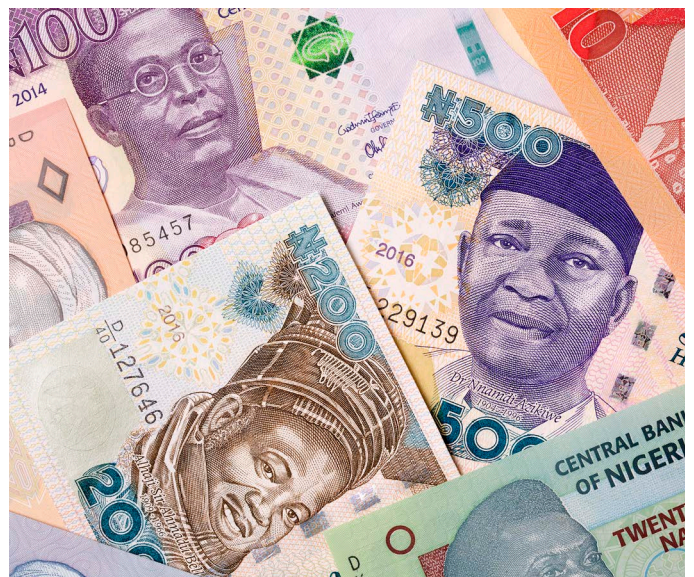
Details of renewing a driver's licence can be found on the same website.

## Opening a bank account

If you previously held an account and it has been closed, you can make a request with your bank to re-open it.

When opening a new bank account, each bank may ask for different documents. In general you will need a form of photo ID such as a passport, as well as proof of address such as a recent utility bill. You may also be asked to provide two references or a deposit when opening an account.

There are many commercial banks operating in Nigeria such as Citibank Nigeria Limited, Access Bank Nigeria, Zenith Bank and First Bank of Nigeria.





# Accommodation

If you are unable to stay with family and friends, you may be able to find temporary emergency accommodation from the organisations below:

## Web of Hearts Foundation

Web of Hearts Foundation assist with the reintegration and resettlement of migrants, internally displaced people and vulnerable young people. They provide a shelter located in Ibeju Lekki, Lagos as well as offering psychosocial support and vocational training programmes.

**Address:** 10B Frank Ojadi Close, Ogidan, Lekki-Epe Expressway, Lagos

**Phone:** +234 8033 238 243 or +234 7060 776 808

**Email:** [webofhearts@yahoo.com](mailto:webofhearts@yahoo.com)

## Caritas Nigeria

This organisation provides support including sheltered accommodation for those in need. They also offer psychosocial support and specialist assistance for undocumented migrants returning to Nigeria or those who have experienced trafficking.

**Address:** Plot 459 Cadastral Zone B2, Durumi, Garki, Abuja

**Phone:** +234 7032 562 546

**Email:** [info@ccfng.org](mailto:info@ccfng.org)

**Website:** [www.caritasnigeria.org](http://www.caritasnigeria.org)

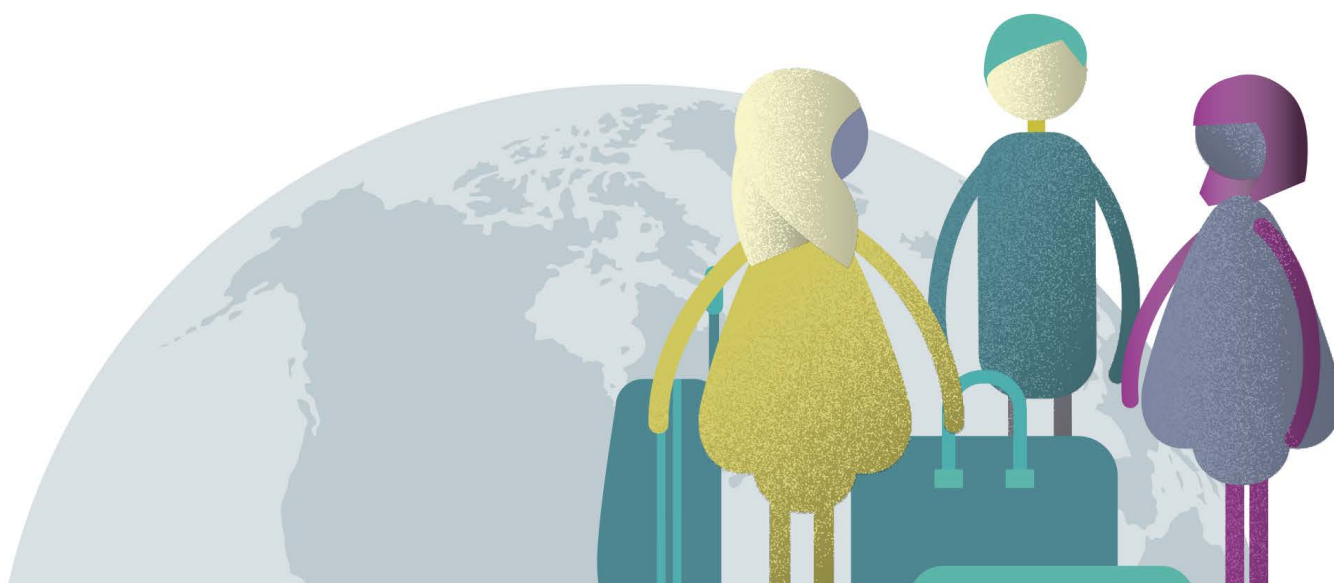
Other short-term accommodation such as B&B's and hostels, can be a cost-effective option in major towns and cities. They can be booked before you leave the UK or in the country of return via the following websites:

[www.hostelworld.com](http://www.hostelworld.com)

[www.booking.com](http://www.booking.com)

[www.expedia.com/Hotels](http://www.expedia.com/Hotels)

[www.airbnb.com](http://www.airbnb.com)



# Healthcare

## Overview

Public and private healthcare is available throughout Nigeria. Large towns and cities have a range of public, private and specialist hospitals. In rural areas of Nigeria, access to healthcare may often be limited to a basic service.

To access healthcare in Nigeria, you will need to register with an approved primary public or private healthcare provider.

The National Health Insurance Scheme (NHIS) offers an insurance scheme for Nigerian citizens. More information and registration details can be found on their website: <https://www.nhis.gov.ng>.

## List of hospitals

### Abuja

#### Kelina Hospital

**Address:** 123 Third Avenue, Gwanna, Abuja  
**Phone:** +234 803 364 4644

#### DIFF Hospital

**Address:** Plot 1195, Cadastral Zone, B18 Sector, Centre D, Off Oladipo Diya St, Gudu, Abuja  
**Phone:** +234 815 087 1300 or +234 815 087 1200

### Lagos

#### Alimosho General Hospital

**Address:** Off Iasun Isheri Expressway, General Bus Stop, Igando, Lagos  
**Phone:** +234 807 559 3774

#### Lagos University Teaching Hospital

**Address:** Ishaga Road, Idi-Araba, Lagos  
**Phone:** +234 905 620 5492

### Benin City

#### Bethel Faith Medical Centre

**Address:** Plots 11 & 12 Jos Bazuaye Layout, Edrediawa Street, Off Ekenwan Road, P.M.8 435, Benin City, Edo State  
**Phone:** +234 803 581 8549

#### St Philomena Hospital

**Address:** 23 Dawson Road, Off Akpakpava Road, Benin City, Edo State  
**Phone:** +234 813 644 3724

## Sexual and reproductive health

In Nigeria, contraception (birth control) is available without a prescription from pharmacies. Condoms can be purchased in pharmacies and healthcare Centres. UIDs, implants and injections are available at family planning clinics. Sexually transmitted infection tests are available at clinics across the country; however it is advisable that you have them carried out at a registered clinic.

## Marie Stopes Nigeria

This organisation operates in Abuja, Lagos and Edo State which offers a wide range of comprehensive sexual and reproductive health services to women, men, and young people for a small fee. Services include contraception and family planning, reproductive health counselling, STI/HIV checks, pregnancy testing, vaccinations, antenatal and postnatal care, and infertility counselling.

**Phone:** +234 800 002 2252 or

+234 908 002 2252 (WhatsApp)

**Website:** <https://www.mariestopes.org.ng/>

## Psychosocial counselling

There are various health providers in Nigeria working to promote mental health awareness that offer care and treatment. They provide support with marital and relationship problems, post-traumatic stress, substance dependency, counselling for HIV patients, as well as mental health support for anxiety and depression.

### Olive Prime

This organisation offers both inpatient and outpatient services and accepts self-referrals. They specialise in areas including trauma, relationship issues, depression, insomnia, addiction and anger management. There may be a charge for these services.

**Address:** Plot 220, E.Momoh Avenue, Kado District, FCT- Abuja

**Phone:** +234 909 696 5483

**Email:** [info@oliveprime.com](mailto:info@oliveprime.com)

**Website:** <http://theoliveprime.com/>

### Mentally Aware Nigeria Initiative (MANI)

This NGO is the largest provider of crisis support services in Nigeria, providing mental health programs. They have a team of in-house counsellors and psychologists who provide free counselling sessions and also help run a suicide hotline.

**Phone:** +234 805 149 3163

**Hotline:** +234 809 111 6264 or  
+234 809 119 6264

**Email:** [vu@mentallyaware.org](mailto:vu@mentallyaware.org)

**Online referral form:** <https://t.co/R3G6iavNTn>

### Wabharm Nigeria

This organisation has an open access treatment centre for individuals and their families who are struggling with drug and alcohol addiction. They also offer support to those facing mental health challenges. Their services include counselling, group therapy, recovery and rehabilitation programmes. They also offer general advice and health checks including tests for HIV and tuberculosis.

**Phone:** +233 24 616 1793

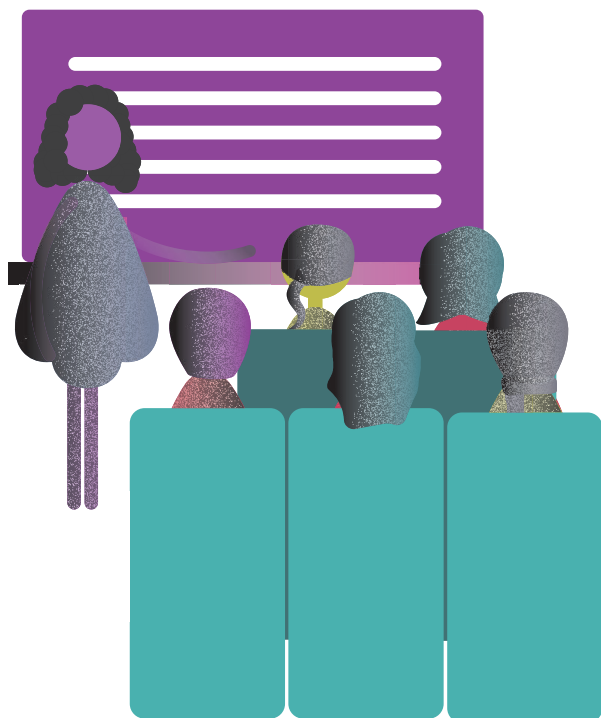
**Website:** [www.wabharmghana.com](http://www.wabharmghana.com)

# Education & employment

## Education

In Nigeria, there are both public and private schools. Primary and junior secondary education is compulsory and free of charge from the age of six. After the first three years of junior secondary education (ages 12-15), students are required to take an exam. Passing this exam will allow students to continue to senior secondary education which is optional and must be paid for.

To access higher education, students are required to pass secondary school examinations or have a West African Certificate of Education.



## Employment and training

Most jobs in Nigeria are gained through personal contacts; it is important to tell friends and family you are looking for work. A good place to start your job search is in the local newspapers and online. The websites below contain job listings in Nigeria:

<http://www.naijacareers.com/>  
[www.jobberman.com](http://www.jobberman.com)

If you have studied in the UK and have certificates that prove you have gained skills and qualifications, this will help you secure a job. Employers in Nigeria may not recognise UK qualifications, in which case you can contact the British Council who may be able to verify any qualifications issued by an accredited UK institution.

The British Council in Nigeria has offices in Lagos, Abuja, Port Harcourt and Kano. Their contact details are:

**Phone:** +234 702 516 4708

**Email:** [info.nigeria@ng.britishcouncil.org](mailto:info.nigeria@ng.britishcouncil.org)

**Website:** [www.britishcouncil.org/ng/](http://www.britishcouncil.org/ng/)

Vocational training opportunities are available in Nigeria. The National Board for Technical Education Technical Education website shows a list of accredited assessors and the courses on offer. A list is available here: <https://net.nbte.gov.ng/VEI>.

# Useful information

## Cost of living

Food	Price (Nigerian Naira, ₦)
Bread 1 loaf	428.06
Milk 1 litre	1,138.28
Water 1.5 litre bottle	207.83
Rice 1kg	974.10
Eggs 12	675.89
Cheese 1kg	1,856.81
Chicken breasts 1kg	1,670.16
Beef 1kg	1,644.92
Potatoes 1kg	759.51
Onions 1kg	645.45
Lettuce	387.44
Tomatoes 1kg	842.04
Oranges 1kg	510.96
Apples 1kg	1,219.47
Bananas 1kg	630.12
Transport	
One way ticket (local transport)	200.00
Monthly pass	9,000.00
Taxi 1km	500.00
Taxi 1 hour	1,650.00
Others	
1 min. of prepaid mobile tariff (local)	19.77
Internet (60 mbps or more, unlimited data)	18,671.05
Formula milk	6,500.00
Nappies	3,400.00
Salaries	
Average monthly net salary (after tax)	75,868.73

Correct in December 2021

## Significant dates and public holidays

Date	Holiday name
1st January	New Year's Day
Varies every year	Good Friday
Varies every year	Easter Monday
1st May	Worker's Day
Varies every year	Eid-al-Fitr
Varies every year	Eid-al-Adha
1st October	Independence Day
Varies every year	Eid-al-Mawlid
25th December	Christmas Day
26th December	Boxing Day

Shops and public services may be closed on these dates (some dates subject to change).

## Emergency contact numbers

**Ambulance, Fire & Police:** 112 or 199

# Useful contacts

## International Organization for Migration (IOM)

The IOM offers resettlement and reintegration support to voluntary returnees to Nigeria.

**Email:** [iomnigeria@iom.int](mailto:iomnigeria@iom.int)  
**Website:** <https://nigeria.iom.int>

### Lagos

**Address:** No 1, Isaac John Street, G.R.A. Ikeja, Lagos  
**Phone:** +234 906 592 5462 or +234 906 265 8210 or +234 902 856 6609

### Abuja

**Address:** 55 Hassan Musa Katsina Road, Asokoro, Abuja  
**Phone:** +234 906 596 4234

## Caritas Nigeria

This is a faith-based organisation providing programmes to help with development, advocacy, and self-focused wellbeing. They work with women, men and children regardless of race or religion. They also provide support to widows, unemployed young people and those who have experienced trafficking or forced migration.

**Address:** Plot 459 Cadastral Zone B2, Durumi, Abuja  
**Phone:** +234 803 709 9291 or +234 811 394 2132  
**Email:** [info@ccfng.org](mailto:info@ccfng.org)  
**Website:** [www.caritasnigeria.org](http://www.caritasnigeria.org)

## Centre for Youth Integrated Development (CYID)

They provide reintegration assistance to those returning to Nigeria. Programmes include vocational training, counselling, assistance with sheltered accommodation and medical treatment for those in need.

**Address:** 111 Marina Road, Lagos Island, Lagos  
**Phone:** +234 805 527 9919  
**Email:** [info@cyid.org](mailto:info@cyid.org)  
**Website:** [www.cyid.org](http://www.cyid.org)

## Women's Rights Advancement and Protection Alternative (WRAPA)

This organisation supports women in difficult circumstances including those who have experienced gender-based violence. Their services include: sheltered accommodation for women and girls needing protection from abusive environments, basic provisions for women facing destitution, legal aid assistance and skills-based training programmes.

**Address:** 19 Monrovia Street, off Aminu Kano Crescent, Wurse II, Abuja  
**Helpline:** +234 818 869 9961 or +234 817 212 5692 or +234 706 380 7887 (24 hours)  
**Email:** [wrapa399@gmail.com](mailto:wrapa399@gmail.com) or [wrapa399@yahoo.com](mailto:wrapa399@yahoo.com)  
**Website:** [www.wrapanigeria.org](http://www.wrapanigeria.org)

## Federal Republic of Nigeria

Provides information on government services and links to other useful contacts relating to every day amenities.

**Website:** <https://www.nigeria.gov.ng/index.php>

# Map of Nigeria



# Disclaimer

Whilst the information in this document was collected with great care and careful attention, Hibiscus Initiatives does not guarantee the accuracy of this information. Hibiscus Initiatives does not endorse any views, opinions or policies expressed by any organisations referred to in this document and accepts no responsibility for any conclusions or results based on information provided in this booklet. This publication does not constitute an offer, solicitation, or recommendation for the sale or purchase of any produce or services.





Published by  
**Hibiscus Initiatives**  
Resource for London,  
356 Holloway Road, London,  
N7 6PA, United Kingdom

[hibiscusinitiatives.org.uk](http://hibiscusinitiatives.org.uk)

First published 2021  
© Hibiscus Initiatives

Design: Prospectus

This publication is copyright,  
but may be reproduced by  
any method without fee or  
prior permission for teaching  
purposes, but not for resale.

For copying in any other  
circumstances, prior written  
permission must be obtained  
from the publisher, and a fee  
may be payable.

