

# Returning to Ghana



Hibiscus Initiatives provide advocacy, support and specialist services to marginalised migrants affected by the criminal justice and immigration systems to enable informed choices and positive change. We promote justice and respect to reduce inequalities.

### **The charity's work falls within four broad categories:**

- Community and prisons
- International resettlement and detention services
- Anti-trafficking
- Volunteering and mentoring

The international resettlement programme provides a support service to clients to facilitate their reintegration into the community in their country of origin.

Through providing resettlement related support and practical assistance we aim to ensure the smoothest possible transition for our clients returning to their home countries. Often this can mean signposting to organisations providing support, finding accommodation, getting identification documents and passports back, helping with internal travel, liaison with families and providing resettlement grants to aid small business start-ups.

Our work is important to clients that have exhausted their rights to be in the UK, those that wish to depart voluntarily, or those who are being deported at the end of serving a sentence for a criminal offence.

### **Contact us**

If you would like to know more about Hibiscus Initiatives, receive support, or know a friend or family member who may need our assistance, please contact:

#### **Hibiscus Initiatives**

Resource for London  
356 Holloway Road  
London N7 6PA

**Email:** [info@hibiscus.org.uk](mailto:info@hibiscus.org.uk)

**Website:** <https://www.hibiscusinitiatives.org.uk>

**Phone:** +44 (0)20 7697 4120

**Fax:** +44 (0)20 7697 4272



# Contents

<b>Introduction</b>	<b>4</b>
<b>Planning for your return</b>	<b>5</b>
Medication	
Family and friends	
Faith-based organisations	
<b>What to expect on arrival</b>	<b>6</b>
Arrival at the airport	
<b>Transport</b>	<b>7</b>
<b>Essential information and important documents</b>	<b>8</b>
ID cards	
Driving licence	
Opening a bank account	
<b>Accommodation</b>	<b>9</b>
<b>Healthcare</b>	<b>10</b>
Overview	
List of hospitals	
Sexual and reproductive health	
Psychosocial counselling	
<b>Education and employment</b>	<b>12</b>
Education	
Employment and training	
<b>Useful information</b>	<b>13</b>
Cost of living	
Significant dates and public holidays	
Emergency contact numbers	
<b>Useful contacts</b>	<b>14</b>
<b>Map of Ghana</b>	<b>15</b>
<b>Disclaimer</b>	<b>16</b>

# Introduction

This booklet has been designed to provide you with information that will help ease your return to Ghana. Inside it you will find useful general information about your return, what to expect and a list of contact details of organisations that may be able to help with any resettlement related issues you encounter.



# Planning for your return

The more planning that is done for your return to Ghana, the easier it will be for you to benefit from support services when you arrive. There are a number of things to think about before you depart the UK, such as: who will meet you at the airport? Where will you stay? Can family or friends support you emotionally, financially or help you to familiarise yourself with life in Ghana?

Before your departure, you may want to consider:

## Medication

It is important to talk to your doctor before leaving for Ghana. If you are currently taking medication, your doctor should be able to advise you on how to source further medication. It might be beneficial for you to request a letter from a GP or doctor, detailing your condition. The more information you have about your medical condition, the easier it will be to continue treatment after your arrival.

## Family and friends

If you have family or friends living in Ghana, you may wish to tell them of your arrival in case they can support you with your immediate needs upon your return. Try to take their contact details with you to the airport so that you can contact them on arrival or before you leave.

The British Red Cross provides a free service aimed at restoring contact between families that have been separated. You may access this programme by directly contacting them at:

**Address:** British Red Cross, UK Office, 44 Moorfields, London EC2Y 9AL

**Email:** [contactus@redcross.org.uk](mailto:contactus@redcross.org.uk)

**Phone:** +44 (0)344 871 1111

**Website:** [www.redcross.org.uk](http://www.redcross.org.uk)

## Faith-based organisations

There may be faith-based organisations in the UK that can suggest avenues of support and places of worship where you will be returning. Faith-based organisations can often provide essential basic support to those of all faiths or with no faith. A good place to start would be to contact members of your local community or faith-based leaders. It is advisable to make enquiries with these organisations or communities early on so that suitable arrangements can be made for you.



# What to expect on arrival

## Arrival at the airport

Once you have disembarked from the aircraft you will be taken to the airport where administrative services will be carried out for your re-entry into Ghana.

Now that you are in Ghana, you may want to start thinking about being reunited with family and friends, finding a job, getting a new ID and so on.



# Transport

There are a number of different transportation methods available in Ghana. The country has extensive air, road, rail and water transport infrastructure.

The main point of entry into Ghana by air is Kotaka International Airport in Accra.

Most transport networks are centered in the southern region of the country. Northern and central regions are connected through major road networks.

## Taxis

Metro Mass Transit Ltd and the State Transport Company (STC) both run scheduled bus services between urban areas and cities across the country. STC provides a fast and safe service, operating along most paved roads in Ghana. Fares start from between GHS 14 and GHS 24 (approximately £4.00-£10.00) depending on the route and provider.

## Buses and trains

Trains are run by the Ghana Railway Corporation. Most routes are limited to the southern parts of Ghana: the Greater Accra region, Central region, Western region, Eastern region and Ashanti region.

The main railway routes are the Ghana Eastern rail line connecting Kumasi to Koforidua and the Ghana Western rail line connecting Kumasi to Sekondi-Takoradi, Sunyani and Cape Coast.



# Essential information & important documents

## ID cards

All Ghanaian nationals are required to register for a Ghana Card which is issued by the National Identification Authority (NIA).

The Ghana Card contains basic information including: name, photograph, address, date of birth and a personal identification number (PIN). The card will also display your signature and fingerprint. Further information can be found by visiting: [www.nia.gov.gh](http://www.nia.gov.gh).

Type of identification	Where they are available from
Passport	<b>Ministry of Foreign Affairs and Regional Integration</b> Phone: +233 030 700 8222 Website: <a href="https://passport.mfa.gov.gh/">https://passport.mfa.gov.gh/</a>
Driving licence	<b>Driving Licence and Vehicle Authority</b> Phone: +233 030 276 4529 Website: <a href="http://dvla.gov.gh/">http://dvla.gov.gh/</a>
SSNIT card	<b>Social Security and National Insurance Trust</b> Phone: +233 030 261 1622 Website: <a href="https://www.ssnit.org.gh/">https://www.ssnit.org.gh/</a>
Voter's ID	<b>Electoral Commission of Ghana</b> Phone: +233 030 396 8750 Website: <a href="https://www.ec.gov.gh/">https://www.ec.gov.gh/</a>
Overseas Ghana Worker ID	<b>Ghana Immigration Services</b> Phone: +233 302 224 445 Website: <a href="https://home.gis.gov.gh/permits-and-visas/">https://home.gis.gov.gh/permits-and-visas/</a>

## Driving licence

In order to drive in Ghana you will require a valid Ghanaian driving licence. The minimum age for driving is 18 years of age. You must have had a learner driver's licence for a minimum of 3 months before applying for a full driver's licence. Applicants must be able to read and write and will be required to take a written, oral and practical exam.

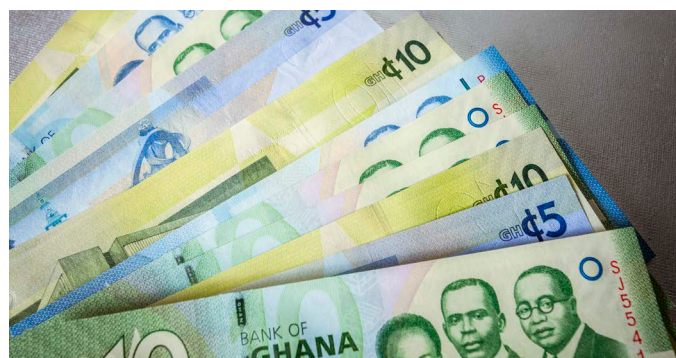
You can apply for a licence at your local Driver and Vehicle Licencing Authority (DVLA) by visiting: <http://dvla.gov.gh/>.

## Opening a bank account

If are opening a bank account in Ghana, you will need to bring valid photo ID. Depending on the bank, additional documentation you may need are:

- Proof of residence
- Tax Identification Number
- Passport-sized photographs
- Reference letter from an existing account holder or employer
- A minimum deposit or fee

The most popular banks in Ghana are: Eco bank, Access bank, Bank of Ghana and Barclays.





# Accommodation

If you are unable to stay with family and friends you may be able to find temporary emergency accommodation from the organisation below:

## The Pearls Safe Haven

This organisation provides emergency shelter and advice for those who have experienced domestic violence, rape and abuse. They promote the basic human rights of women and children.

**Address:** House no. 58, George Bush Highway, Mako House Building, Dzorwulu, Accra

**Phone:** +233 55 336 9612 or +233 24 729 3648

**Email:** [info@thepearlsafehaven.org](mailto:info@thepearlsafehaven.org)

**Website:** <https://thepearlsafehaven.org/>

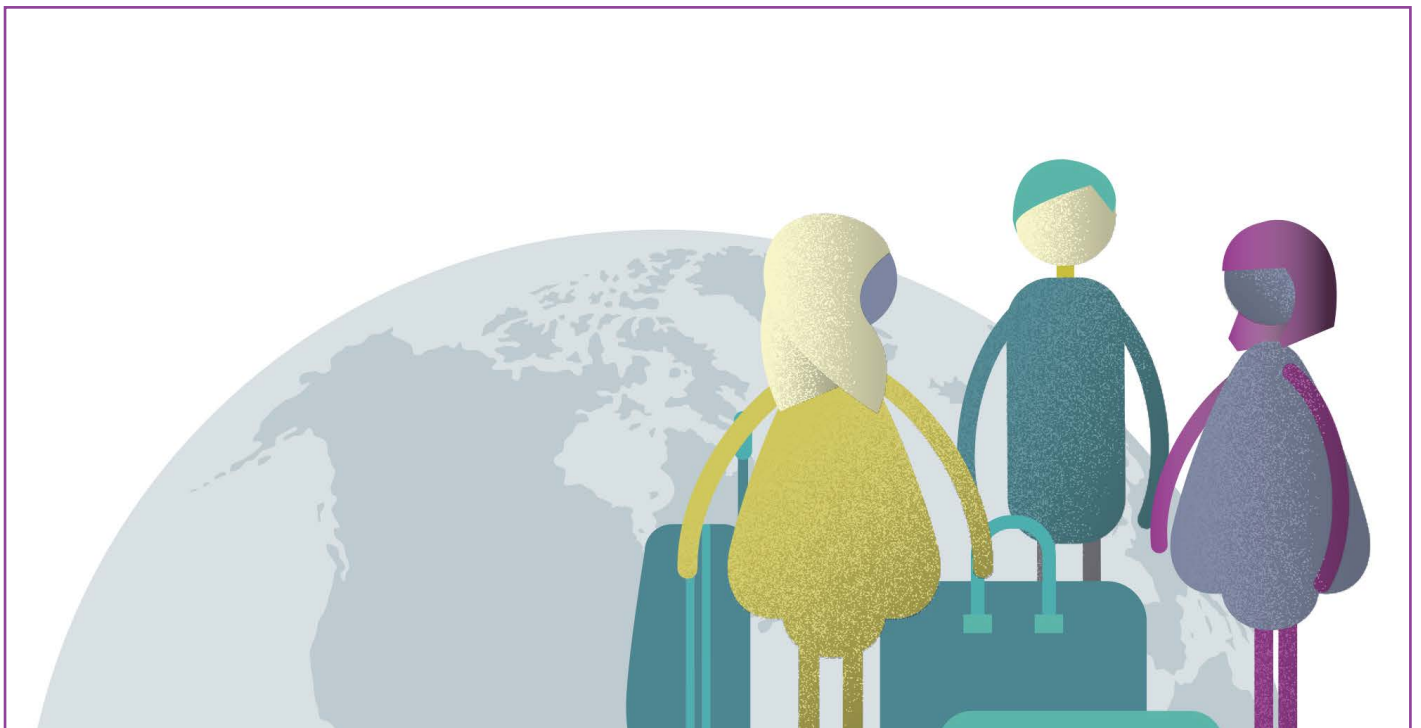
Other short-term accommodation such as B&B's and hostels, can be a cost-effective option in major towns and cities. They can be booked before you leave the UK or in the country of return via the following websites:

<https://www.hostelworld.com>

<https://www.booking.com>

<https://www.expedia.com/Hotels>

<https://www.airbnb.com>



# Healthcare

## Overview

The majority of healthcare in Ghana is provided by the Government and administered by the Ministry of Health and Ghana Health Services. Healthcare is readily accessible in urban areas which is available at hospitals, clinics and pharmacies.

### The National Health Insurance Scheme (NHIS)

Ghana has a universal insurance system (NHIS) which allows Ghanaian citizens to pay contributions into a fund. If you join the scheme, you will be able to receive affordable healthcare in the event of an illness and will be given a card to show you are eligible for treatment at any hospital. To find out more information about the scheme, or to register, visit [www.nhis.gov.gh](http://www.nhis.gov.gh).

## List of hospitals

### Korle-Bu Teaching Hospital

**Address:** Guggisberg Avenue, Korle Bu, Accra

**Phone:** +233 302 674 066 or +233 243 407 809

**Website:** [www.kbth.gov.gh](http://www.kbth.gov.gh)

### Holy Trinity Medical Centre

**Address:** Amar Korante Street, North Kaneshie, Accra

**Phone:** +233 262 315 061 or +233 267 205 061

**Website:** [www.holytrinity.com.gh](http://www.holytrinity.com.gh)

### Trust Hospital

**Address:** 35 Cantoments Road, Oxford Street, OSU RE, Accra

**Phone:** +233 302 761 974 or +233 302 761 975

**Website:** [www.thetrusthospital.com](http://www.thetrusthospital.com)



## **Sexual and reproductive health**

In Ghana, contraception (birth control) is available without a prescription from pharmacies. Condoms can be purchased in pharmacies and healthcare centres. UIDs, implants and injections are available at family planning clinics. Sexually transmitted infection tests are available at clinics across the country, however it is advisable that you have them carried out at a registered clinic.

## **Psychosocial counselling**

There are various health providers in Ghana working to promote mental health awareness that offer care and treatment. They provide support with marital and relationship problems, post-traumatic stress, substance dependency, counselling for HIV patients, as well as mental health support for anxiety and depression.

### **Accra Psychiatric Hospital**

This hospital offers consultations to assess and treat those with mental health concerns such as anxiety, depression, dementia, psychosis, and alcohol and substance misuse.

**Address:** Castle Road, Accra

**Phone:** +233 302 228 688

**Website:** [www.accrap psychiatric hospital.org](http://www.accrap psychiatric hospital.org)

### **Wabharm Ghana**

This organisation has an open access treatment centre for individuals and their families who are struggling with drug and alcohol addiction. They also offer support to those facing mental health challenges. Their services include counselling, group therapy, recovery and rehabilitation programmes. They also offer general advice and health checks including tests for HIV and tuberculosis.

**Address:** Samba Close, Wabharm House, Opp. Shoprite, Weija, Accra

**Phone:** +233 24 616 1793

**Website:** [www.wabharmghana.com](http://www.wabharmghana.com)

# Education & employment

## Education

In Ghana, there are both public and private schools. The Ghanaian education system is divided into three parts:

Primary education starts at kindergarten for two years. This is followed by six years of compulsory primary education and three years at junior secondary school.

Secondary senior education lasts three years.

Further education involves a four year Bachelor's degree at university.

## Employment and training

Most jobs in Ghana are gained through personal contacts; it is important to tell friends and family you are looking for work. A good place to start your job search is in the local newspapers and online. The websites below contain job listings in Ghana:

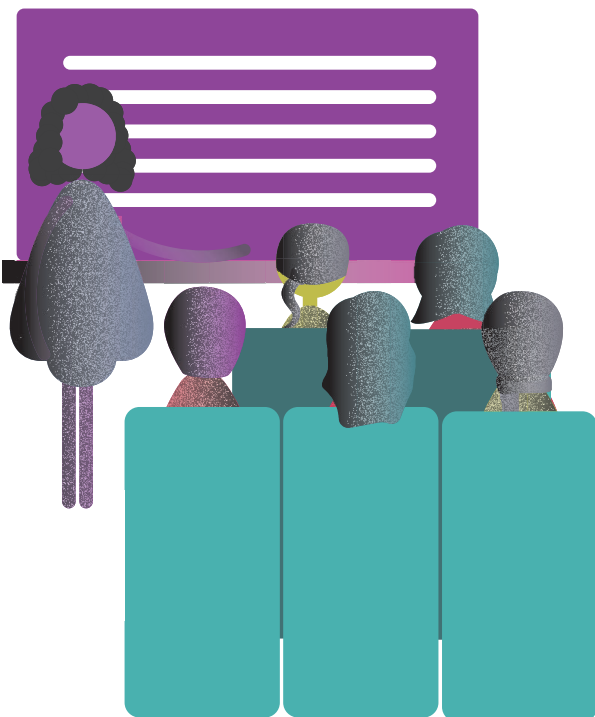
[www.ghanaweb.com/GhanaHomePage/jobs](http://www.ghanaweb.com/GhanaHomePage/jobs)  
[www.jobsinghana.com](http://www.jobsinghana.com)  
[www.yea.gov.gh](http://www.yea.gov.gh)

If you wish to set up a business after your return to Ghana, the following websites contain useful information and advice:

**Ghana Export Promotion Council (GEPC)**  
**Website:** [www.gepcghana.com](http://www.gepcghana.com)

**Ghana Chamber of Commerce and Industry (GCCI)**  
**Website:** [www.ghanachamber.org](http://www.ghanachamber.org)

Vocational training opportunities are available in Ghana. The Council for Technical and Vocational Educational Training (COTVET) website shows a variety of courses on offer: <https://cotvet.gov.gh/>.



# Useful information

## Cost of living

Food	Price (Ghanaian Cedi, ₵)
Bread 1 loaf	5.85
Milk 1 litre	10.90
Water 1.5 litre bottle	3.01
Rice 1kg	10.56
Eggs 12	11.25
Cheese 1kg	68.00
Chicken breasts 1kg	25.52
Beef 1kg	26.50
Potatoes 1kg	13.20
Onions 1kg	10.53
Lettuce	6.02
Tomatoes 1kg	13.52
Oranges 1kg	9.62
Apples 1kg	15.88
Bananas 1kg	9.39
Transport	
One way ticket (local transport)	3.25
Monthly pass	198.00
Taxi 1km	6.00
Taxi 1 hour	30.00
Others	
1 min. of prepaid mobile tariff (local)	0.23
Internet (60 mbps or more, unlimited data)	304.92
Formula milk	35.00
Nappies	25.00
Salaries	
Average monthly net salary (after tax)	1,763.14

Correct in October 2021

## Significant dates and public holidays

Date	Holiday name
1st January	New Year's Day
7th January	Constitution Day
6th March	Independence Day
Varies every year	Good Friday
Varies every year	Easter Monday
1st May	Labour Day
25th May	African Unity Day
1st July	Republic Day
Varies every year	Eid-al-Fitr
Varies every year	Eid-al-Adha
4th August	Founder's Day
21st September	Memorial Day
First Friday in December	National Farmer's Day
25th December	Christmas Day
26th December	Boxing Day

Shops and public services may be closed on these dates (some dates subject to change).

## Emergency contact numbers

<b>Police:</b>	191
<b>Ambulance:</b>	193
<b>Fire services:</b>	192

# Useful contacts

## International Organization for Migration (IOM)

The IOM offers resettlement and reintegration support to voluntary returnees to Ghana.

**Address:** House 10, Plot 48, Osu Badu Road, Airport West, Accra

**Phone:** +233 302 742 930 or +233 302 742 930

**Email:** [iomaccra@iom.int](mailto:iomaccra@iom.int)

**Website:** [www.iom.int/countries/ghana/](http://www.iom.int/countries/ghana/)

## Caritas Ghana

Caritas Ghana is a Catholic organisation that serves to help the poor and marginalised. The support they offer includes microfinance programmes to assist business start-ups and agricultural projects.

**Address:** Centenary House, Near Gulf House, Tetteh Quarshie Circle, Accra

**Phone:** +232 78 175 0368 or +233 024 391 2977

**Email:** [info@caritas-ghana.org](mailto:info@caritas-ghana.org)

**Website:** [www.caritas-ghana.org](http://www.caritas-ghana.org)

## Ghana Red Cross

This organisation is run by staff and volunteers, providing services such as health and social care and specialist programmes for young people.

**Address:** Plot No. 10, South Legon, off Gulf House Road, Accra

**Phone:** +233 299 370 431 or +233 302 966 235

**Email:** [redcrossghana@yahoo.co.uk](mailto:redcrossghana@yahoo.co.uk)

## Government of Ghana Official Portal

Contains links to government departments and important practical information.

**Website:** [www.ghana.gov.gh](http://www.ghana.gov.gh)

# Map of Ghana



# Disclaimer

Whilst the information in this document was collected with great care and careful attention, Hibiscus Initiatives does not guarantee the accuracy of this information. Hibiscus Initiatives does not endorse any views, opinions or policies expressed by any organisations referred to in this document and accepts no responsibility for any conclusions or results based on information provided in this booklet. This publication does not constitute an offer, solicitation, or recommendation for the sale or purchase of any produce or services.





Published by  
**Hibiscus Initiatives**  
Resource for London,  
356 Holloway Road, London,  
N7 6PA, United Kingdom

[hibiscusinitiatives.org.uk](http://hibiscusinitiatives.org.uk)

First published 2021  
© Hibiscus Initiatives

Design: Prospectus

This publication is copyright,  
but may be reproduced by  
any method without fee or  
prior permission for teaching  
purposes, but not for resale.

For copying in any other  
circumstances, prior written  
permission must be obtained  
from the publisher, and a fee  
may be payable.

